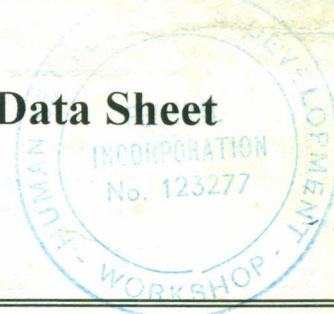


ANGOLA: Socio-Economic Indicators Data Sheet

Prepared by UNICEF

May 1997

(Updated or added information)



1. Population	Total (1997)	<u>12.3 million</u> (a)
	Gender Ratio (w/m)	1.06
2. Annual Population Growth Rate		3.0 %
3. Total Affected Population	(January 1996)	3.7 million
Of which: Internally Displaced Population		1.2 million
Refugees		<u>0.3 million</u>
Soldiers to be demobilized/demobilized with dependents		<u>0.5 million</u>
4. Population with access to:	Safe Water (1991)	41 %
	Sanitation	19 %
	Primary health care	30 %
5. Infant Mortality Rate	(1994)	195 per 1,000 births (b)
6. Under-Five Mortality Rate	(1994)	320 per 1,000 births (b)
7. Maternal Mortality Rate	(1993/94)	1,500 per 100,000 births (b)
8. National School Enrolment Rate	(1992)	42%
9. Low Weight at Birth Rate (<2500 g)	(1990)	19.2 %
	(1993)	17.8 %
10. Unemployment rate:		<u>1993</u> <u>1995</u>
	Luanda:	24% 44% (c)
	Other:	45% (c)
11. Inflation Rate:	Luanda, 1997, monthly	<u>Jan 7.9% (d), Feb 2.2% (d), Mar -3.5%</u>
	Luanda, Mar. 1996 - Mar. 1997	<u>1,151%</u>
	Luanda, Jan. 1997 - Mar. 1997	<u>6.4%</u>
	Luanda, Jan - Dec cumulative	<u>1992</u> <u>1993</u> <u>1994</u> <u>1995</u> <u>1996</u>
		<u>491%</u> <u>1,838%</u> <u>972%</u> <u>3,784%</u> <u>1,650%</u>
12. GDP per Capita	(1993)	US\$ 611 (e)
13. Real Growth (estimates) (f)		<u>1992</u> <u>1993</u> <u>1994</u> <u>1995</u> <u>1996</u>
		<u>-3.4%</u> <u>-25.0%</u> <u>9.0%</u> <u>12.3%</u> <u>10.3%</u>
14. Money Growth (increase in M2), real (g)		<u>1992</u> <u>1993</u> <u>1994</u> <u>1995</u>
		<u>-28%</u> <u>-60%</u> <u>87%</u> <u>-65%</u>
14-1 Money Growth (increase in M2), nominal		<u>328%</u> <u>679%</u> <u>1,905%</u> <u>1,270%</u>
15. Total External Debt	(1994)	US\$ 11.3 bn (h)
Of which Arrears		US\$ 7.3 bn
16. Total External Debt/Total Export	(1994)	506 %
17. Total External Debt/GDP	(1993)	177 %
18. Debt/Capita	(1994)	US\$ 1,076
19. Debt Service Ratio (i)	(1991)	<u>National Bank</u> <u>World Bank</u>
Obligation		52%
Actual(excl.private non-guaranteed debt and interest on short-term debt)		12% (est.) 5.8%(est.)

20. Main Exports (yearly estimates) (j)	US\$ million	<u>1992</u>	<u>1993</u>	<u>1994</u>	<u>1995</u>
20-1 Real 1st Quarter 1994, 1995	US\$ million	3,714	2,784	2,837	
Real 2nd Quarter 1995	US\$ million			593	802
Real 3rd Quarter 1994, 1995	US\$ million				968
Var (3rd quarter 95/3rd quarter 94)	US\$ million			791	827
					4.6%
21. Main Imports (estimate) (1994)	US\$ million			1,136	
21-1 Real 1st Quarter 1994, 1995				360	229
Var (1st quarter 95/1st quarter 94)					-36%
22. Exchange Rates (Kwr/USD): (k)		<u>Official</u>	<u>Parallel</u>	<u>Gap</u>	
Annual average 1992		0.4	2.6		
1993		4.9	39.7		
1994		153	320		
1995		2,739	6,171		
1996		127,840	150,871		
Apr 1996		45,507	75,396	65.7%	
May 1996		70,556	180,306	155.5%	
June 1996		155,847	239,250	53.5%	
July 1996		201,994	246,129	21.8%	
Aug 1996		201,994	206,129	2.0%	
Sep 1996		201,994	206,000	2.0%	
Oct 1996		201,994	225,000	11.4%	
Nov 1996		201,994	230,333	14.0%	
Dec 1996		201,994	241,774	19.7%	
Jan 1997		<u>201,994</u>	<u>266,452</u>	<u>31.9%</u>	
Feb 1997		<u>201,994</u>	<u>239,062</u>	<u>18.4%</u>	
Mar 1997		<u>201,994</u>	<u>204,577</u>	<u>1.3%</u>	
23. Estimated budget deficit as a percentage of total expenditures: (l)		<u>1994</u> ⁽²⁾	<u>1995</u> ⁽²⁾		
		<u>16%</u>	<u>21%</u>		
24. Estimated budget deficit as a percentage of GDP (m)		<u>1993</u> ⁽²⁾	<u>1994</u> ⁽²⁾	<u>1995</u> ⁽²⁾	<u>1996</u>
		<u>28%</u>	<u>29%</u>	<u>24%</u>	<u>1997</u> ⁽³⁾
					<u>7%</u>
25. Percentage of State Budget allocated to:		<u>1993</u> ⁽¹⁾	<u>1994</u> ⁽¹⁾	<u>1995</u> ⁽²⁾	<u>1996</u> ⁽³⁾
Health		5%	5%	<u>11%</u>	6%
Education, Culture, Sports		8%	4%	<u>9%</u>	<u>9%</u>
Social Assistance		5%	2%	<u>4%</u>	<u>3%</u>
Defence and Public Order		48%	34%	<u>28%</u>	<u>13%</u>
Administration		26%	49%	<u>38%</u>	<u>30%</u>
Debt repayments/interests		<u>0%</u>	<u>0%</u>	<u>0%</u>	<u>23%</u>
Unclassified		<u>2%</u>	<u>4%</u>	<u>1%</u>	<u>0%</u>
26. Percentage of total ODA allocated to:		<u>1991 (est.)</u>			
Water and Sanitation		4.2%			
Primary Health Care		10.0%			
ODA (n) per capita, 1992		US\$ 30			

(1) Actual

(2) Actual, estimated

(3) planned budget

Sources:

The Government of Angola:

National Institute
of Statistics (I.N.E.)

Ministry of Education:
National Bank of Angola

Ministry of Finances:

1, 2 Bolefin Demografico No 9.

5 to 7. Projections I.N.E./UNICEF

10. Emprego e Desemprego na Cidade de Luanda, Junho-Julho 1993,
Perfil da Pobreza em Angola 1995

11. Indice dos Preços no Consumidor, Jan-Dez 1995. Nota de Imprensa No 1-12, 1996

12, 13. Nucleo das Contas Nacionais

20-1, 21-1. Indicadores de Comercio Externo. Principais Produtos de Exportacao

8. Gabinete de Estudos, Planos e Projectos.

14. Departamento de Estatisticas Monetarias.

15 to 22. Direcção nacional de Estudos Estatisticos.

23, 24, 25. Orçamento Geral do Estado, PES 94, PES 95/96,

3. United Nations Updated Consolidated Inter-Agency Appeal for Angola, Jan-Dec 1996

4, 9. State of the World's Children Report, 1995

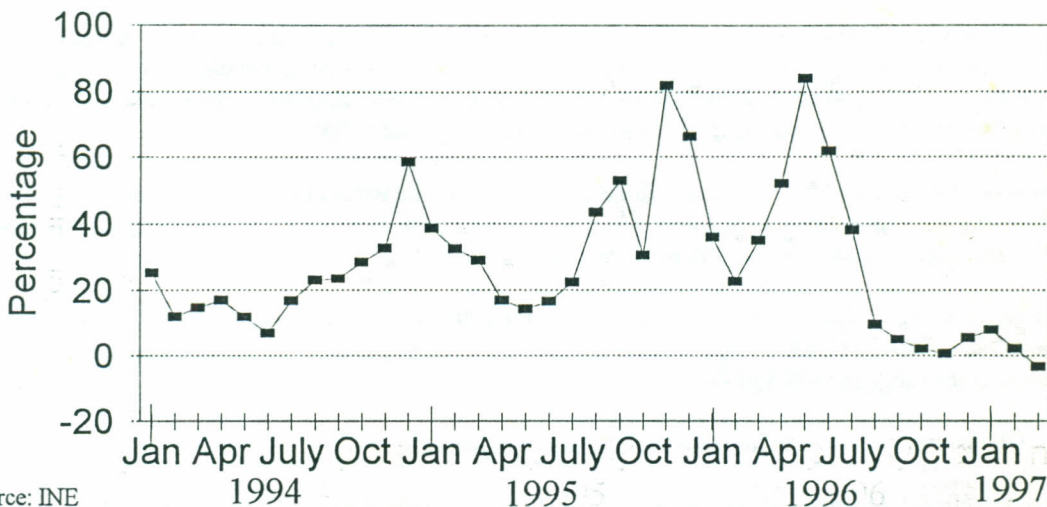
26. Geographical Distribution of Financial Flows to Developing Countries

UCAH:

UNICEF:

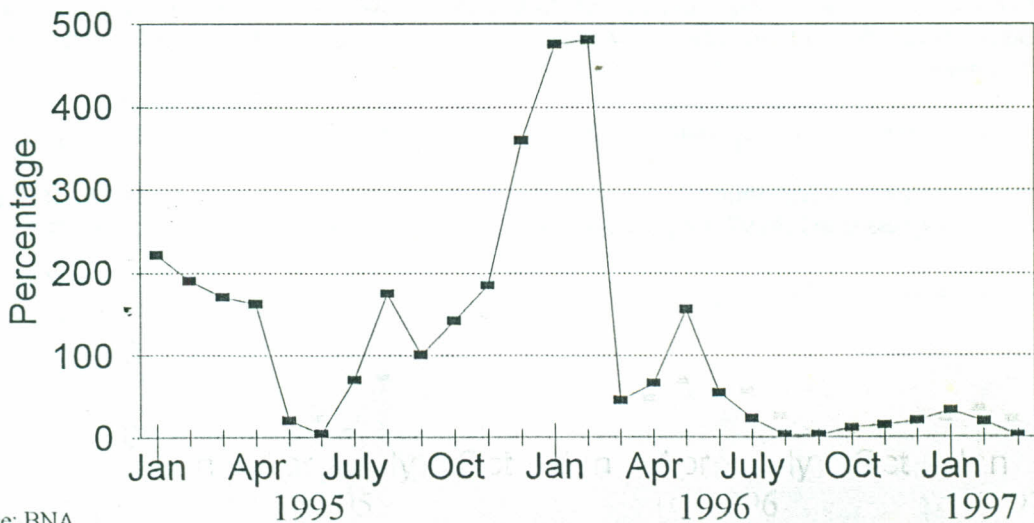
OECD:

Monthly Inflation Rate 1994-1997



Source: INE

Gap, Official-Parallel Exchange Rate 1995-1997



Source: BNA

Notes:

(a) The official country estimate is set at 12.3 million inhabitants for 1997, whereas the United Nations Humanitarian Assistance Coordination Unit (UCAH) using statistics from the electoral list of 1992, estimated the national population at approximately 12.2 million inhabitants for January 1996.

(b) Infant and Under-Five mortality rates have been projected by UNICEF, using existing statistics from 1991, 1992 and 1993, and assume an increase due to widespread epidemics, low vaccination coverage rates and direct exposure to military conflict and landmines.

(c) The Priority Survey of 1995 was carried out in the Provinces of Cabinda, Luanda, Benguela, Moxico and Huila. The average unemployment rate in these 5 provinces was calculated at 45% which is specified under "other". In order to compare with the 1993 figure (24%), which is derived from a local Luanda survey conducted by the Ministry of Employment, the Luanda figure (44%) is also extracted explicitly from the Priority Survey of 1995.

(d) The inflation rate for January 1997 does not include the increases of the water (193,900%) and electricity (47,876%) in the prices. Including these adjustments, the inflation figure would be 64%. Similarly, the inflation figure in February 1997 would be 1.5% including adjustments for water and electricity prices.

(e) GDP per capita was calculated on the basis of the GDP for 1993 (US\$ 6.4 billion) using current prices and a median official exchange rate for 1993 of US\$ 1 = NKz 4,838. However, more recent calculations, although unofficial, place the GNP per capita figure in the range of US\$ 350 - 400.

(f) Reflects GDP growth rates as calculated by the Ministry of Planning.

(g) The figures are calculated by Aguilar and Stenman, "Angola 1996 Hyperinflation, Confusion and Political Crisis", based on information from BNA.

(h) Includes short, medium and long term debt. Arrears represent the inability of government to repay the principal loan and accumulated interest on time.

(i) Calculation = (Annual payment/value of annual export).

(j) Oil (96.8%); Diamonds (3.2%) during the period of Jan-Jun 1995.

(k) As of 03/07/95, the official currency nomenclature was changed from Novo Kwanza (NKz) to Kwanza Reajustado (Kzr). Average monthly exchange rates are calculated once the daily rates are summed up, and then divided by the number of days in the respective month.

(l) The 1994 - 1995 figures are actual estimates by "Direccao Nacional de Contabilidade" of the Ministry of Finance.

(m) The 1993 -1994 figures are actual estimates as expressed in PES 94 and PES 95/96 respectively. The 1997 figure is the planned outcome as expressed in PES 97 (Programa de Politica Economica e Social do Governo para 1997).

(n) Official Development Assistance.

The Socio-Economic Indicators Data Sheets are a regular publication of UNICEF Angola's Social Planning, Research and Evaluation Section. Any comments and/or suggestions are welcome so as to improve future updates. UNICEF Angola, Social Planning, Research and Evaluation Section, 197, rua Major Kanhangulo, 3rd Floor, P.O. Box 2707, Luanda. Telephone: +244-2-332348/34; Facsimile: +244-2-337037; e-mail: Unicef.Luanda@Unicef.org